



galleryVEDā

# THE CARTPET PROJECT

&

## The Breaking Barrier's Project

4/22, Rutland Gate 5th St, Thousand Lights West,  
Nungambakkam, Chennai 600006.

[www.galleryveda.com](http://www.galleryveda.com) | [info@galleryveda.com](mailto:info@galleryveda.com) | Ph: 044 4309 0422

co- partners

art  soul

# THE CARPET PROJECT

The first step was the selection of the artwork, because Brinda and I knew that we wanted to work with the most celebrated artists. We asked the artist for images only and did not take any artworks from their collection. We received a very encouraging response from all the artists, as they have always supported us in all our fund raising endeavors for Breast Cancer, ever since 2003.

We chose 3 different companies to work on the production, based on the complexity of the images.

The process started with studying the painting and understanding the number and tones of colours & types of shapes involved.

After which was the process of creating a “visualization,” which is a graphic representation of the actual rug. This is the closest image that you can see of the rug before it is produced. It takes almost 35-40-man hours to create a single visualization of a carpet of the size 5’ x 7’ feet.

In the visualization, colour numbers are allotted to each shade that will be used, from a paint box and we compare the selected colors to the original artwork. The challenge is that since most of the images were sent to us on email, we had to make allowances for the different viewing media. Brinda was instrumental in this process, with her excellent colour sense.

At this point, the vendor who is in charge of production will decide the different textures that will make up the final rug. This is a process we leave entirely to them, since there is a mix of fine New Zealand Wool and silk yarn.

Now we are ready for the production to begin.

This is a lengthy 10 step process and especially in this case where almost all the designs involved more than 15-20 colours it became an even lengthier one.

The approved visualization gets converted into an actual life size stencil while simultaneously the yarns (wool & silk) are sent to be dyed in the various colours.

One of the most crucial steps is to make sure the dyed yarn has come out exactly as selected else, the rug will turn out looking different than the painting. Having the stencil & yarns ready we then begin the tufting process.

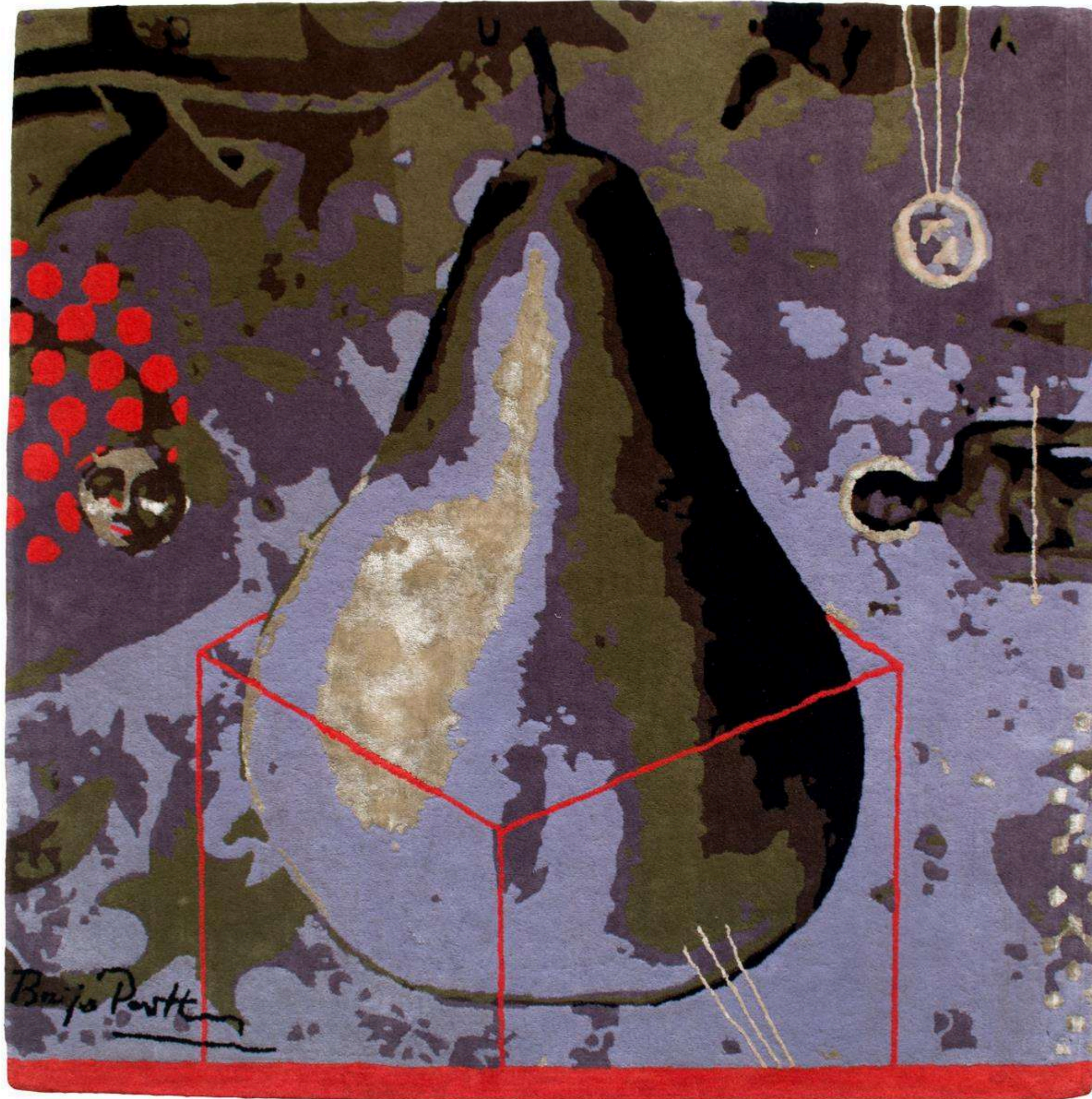
The tufters tuft each yarn into the warp & weft of the base cloth. The tufting process of such a 5’ x 8’ rug takes up to 168 man hours.

Once the design is tufted onto the base cloth the technical process of latexing and finishing happens to give the rugs their final look.

A team of skilled workers shear the yarns to give it a smooth and shiny look and the interesting textures !

After a period of 8 weeks you get the rug that you saw as a visualization!

**DR TARANA KHUBCHANDANI**



**BAIJU PARTHAN**  
6 X 6 FEET / 70 X 71 INCHES  
HAND TUFTED IN NEW ZEALAND WOOL  
WITH BLENDED SILK



**MANU PAREKH**  
6 X 7 FEET / 72 X 84 INCHES  
HAND TUFTED IN NEW ZEALAND WOOL  
AND SILK



**SHUVAPRASANNA**

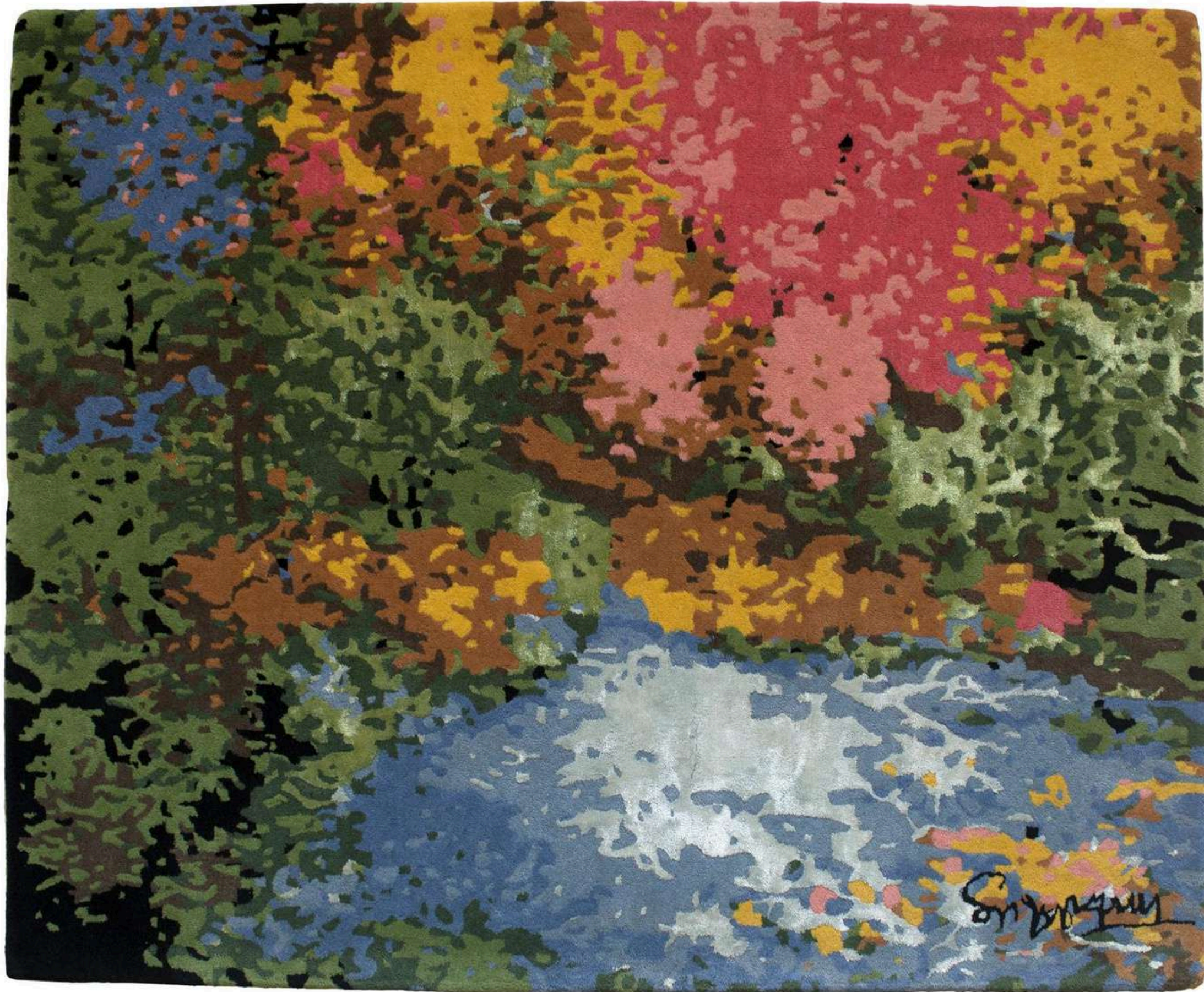
7 X 5 FEET / 84 X 60 INCHES

HAND TUFTED IN NEW ZEALAND WOOL

WITH BANANA SILK YARN



**RINI DHUMAL**  
7 X 5 FEET / 84 X 60 INCHES  
HAND TUFTED IN NEW ZEALAND WOOL  
WITH BANANA SILK YARN



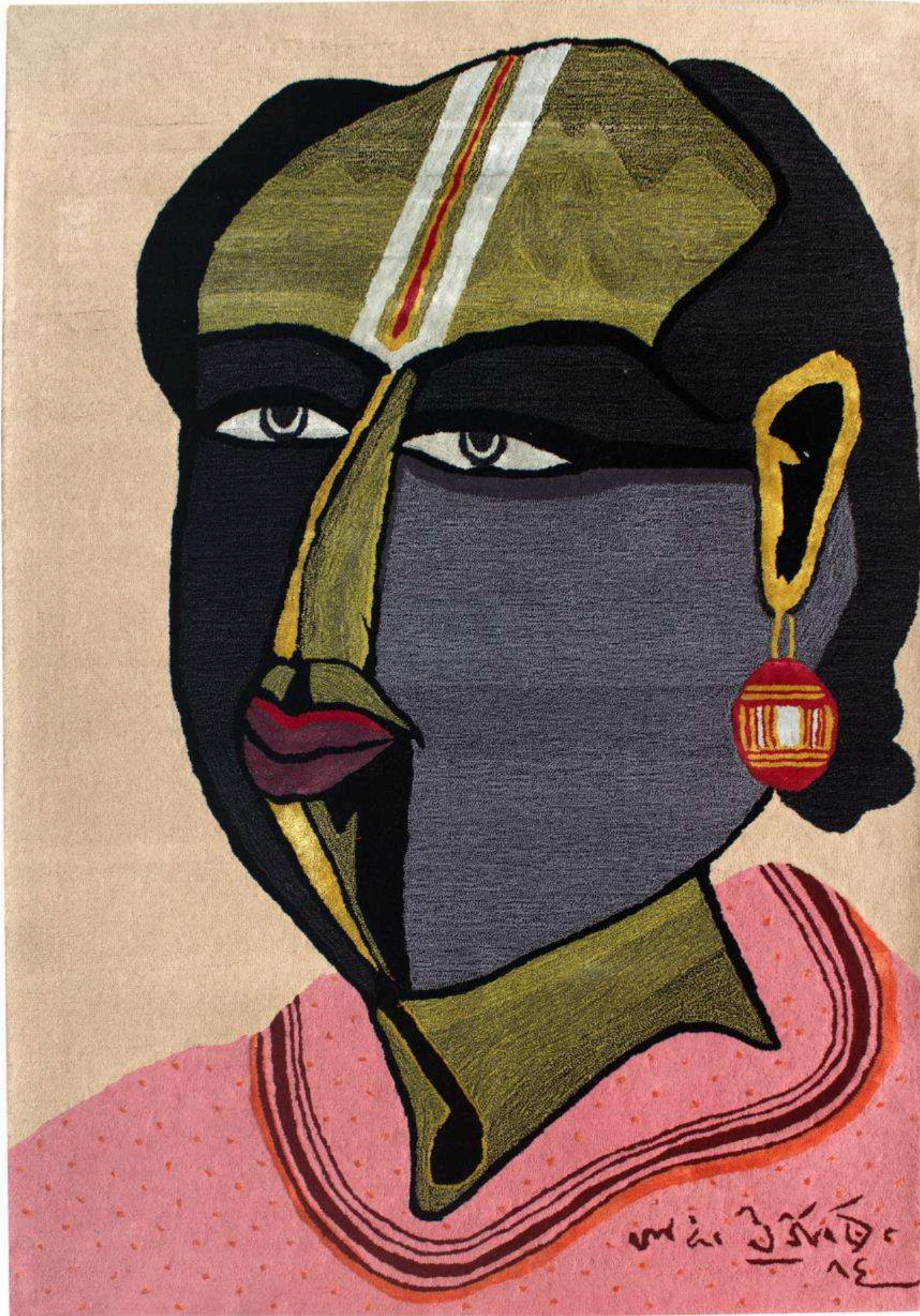
**SURYAPRAKASH**  
5 X 7 FEET / 60 X 84 INCHES  
HAND TUFTED IN NEW ZEALAND WOOL  
WITH BLENDED SILK



**SENAKA SENANAYAKE**

5 X 7 FEET / 60 x 84 INCHES | Hand Tufted in New Zealand Wool with Blended Silk





**THOTA VAIKUNTAM**  
7 X 5 FEET / 84 X 60 INCHES  
HAND TUFTED IN NEW ZEALAND WOOL  
WITH BANANA SILK YARN



**THOTA VAIKUNTAM**  
7 X 5 FEET / 84 X 60 INCHES  
HAND TUFTED IN NEW ZEALAND WOOL  
WITH BANANA SILK YARN



**ANJOLIE ELA MENON**  
9.5 X 4 FEET / 112 X 49 INCHES  
HAND TUFTED IN NEW ZEALAND WOOL  
AND SILK



**BADRI NARAYAN**

6 X 6 FEET / 72 X 72 INCHES

HAND TUFTED IN NEW ZEALAND WOOL

WITH BANANA SILK YARN



**BADRI NARAYAN**

6 X 6 FEET / 72 X 72 INCHES

HAND TUFTED IN NEW ZEALAND WOOL

WITH BANANA SILK YARN



**KRISHEN KHANNA**  
7 X 5 FEET / 84 X 60 INCHES  
HAND TUFTED IN NEW ZEALAND WOOL  
WITH BANANA SILK YARN



**NEERAJ GOSWAMI**

8 X 5 FEET / 96 X 60 INCHES

HAND TUFTED IN NEW ZEALAND WOOL

WITH BANANA SILK YARN



**SUDHIR PATWARDHAN**  
7 X 5 FEET / 72 X 49 INCHES  
HAND TUFTED IN NEW ZEALAND WOOL  
AND SILK





**REKHA RODWITTIYA**  
4 X 4 FEET / 48 X 848 INCHES  
HAND KNOTTED IN NEW ZEALAND  
WOOL AND SILK

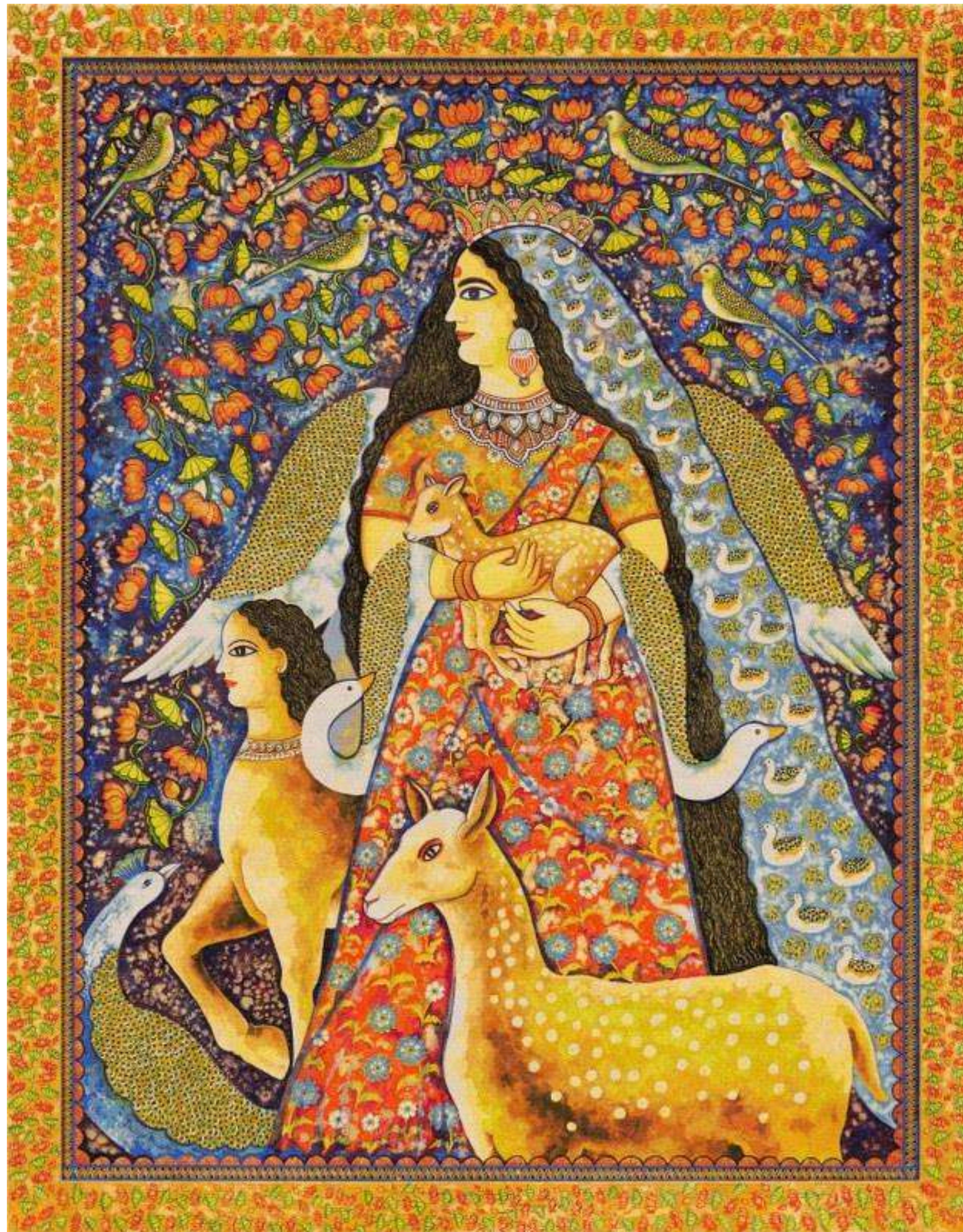


**SATISH GUJRAL**

5 X 7 FEET / 84 x 59 INCHES | Hand Tufted in New Zealand Wool with Banana Silk Yarn



**SATISH GUJRAL**  
6 X 6 FEET / 72 X 72 INCHES  
HAND TUFTED IN NEW ZEALAND WOOL  
WITH BANANA SILK YARN



**JAYSRI BURMAN**  
6 X 5 FEET  
HANDLOOM VISCOSE



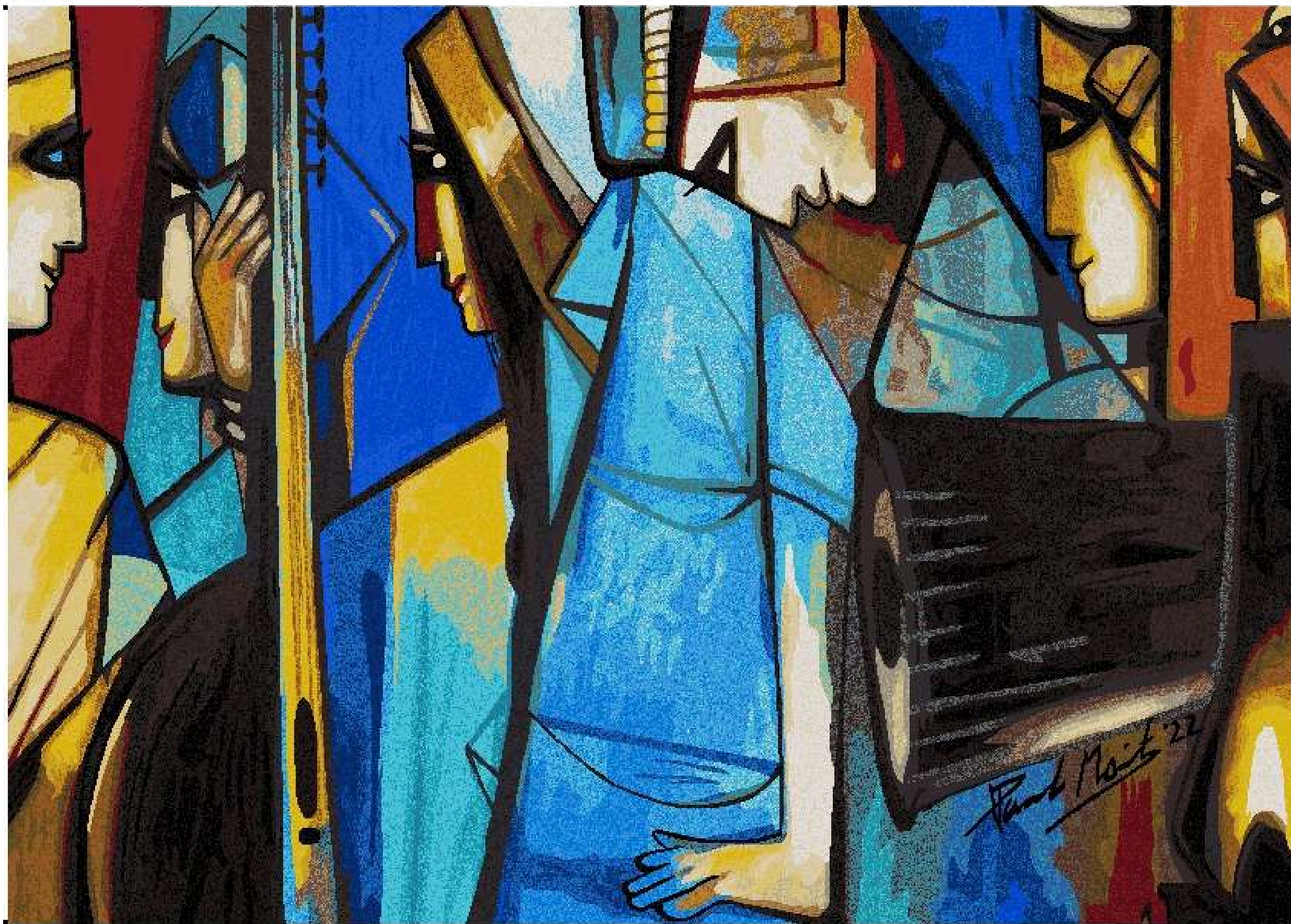
**JAYSRI BURMAN**  
5 X 6.3 FEET  
HANDLOOM VISCOSE



**G R IRANNA**  
6 X 6 FEET / 72 X 72 INCHES  
LIMITED EDITION HAND TUFTED  
CARPET



**PARESH MAITY**  
6 FEET DIAMETER  
LIMITED EDITION HAND TUFTED  
CARPET

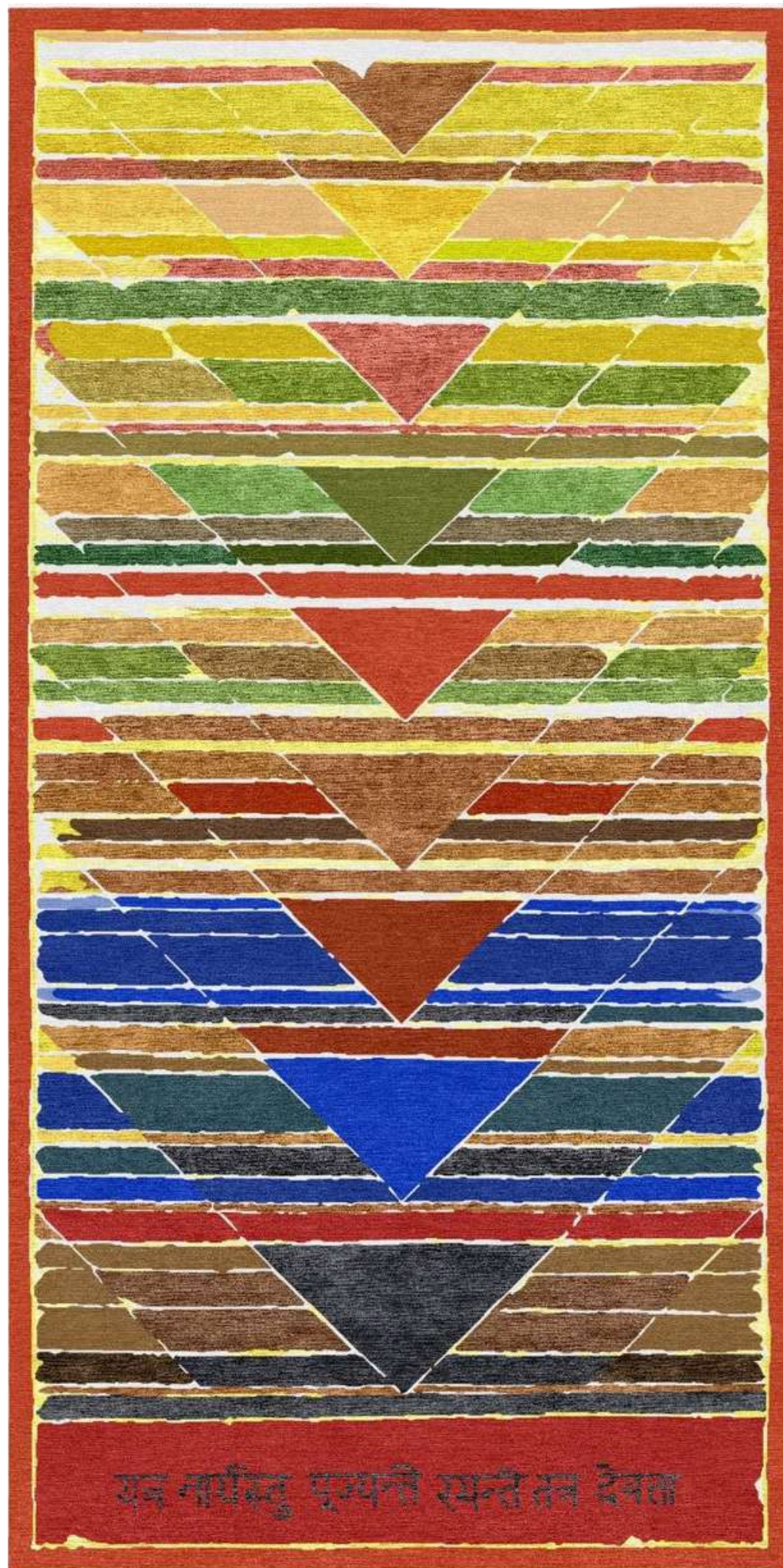


**PARESH MAITY**  
5 X 7 FEET / 60 X 84 INCHES  
LIMITED EDITION HAND TUFTED  
CARPET





**PARESH MAITY**  
5 X 7 FEET / 60 X 84 INCHES  
LIMITED EDITION HAND TUFTED  
CARPET



**S.H RAZA**  
10 X 5 FEET / 120 X 60 INCHES  
LIMITED EDITION HAND TUFTED  
CARPET



**MEITEI DELTEIL**  
5 X 7 FEET / 60 X 85.5 INCHES  
LIMITED EDITION HAND TUFTED  
CARPET



**MEITEI DELTEIL**

5 X 7 FEET / 72 x 108 INCHES | LIMITED EDITION HAND TUFTED CARPET



**MEITEI DELTEIL**  
6 X 7 FEET / 72 X 84 INCHES  
LIMITED EDITION HAND TUFTED  
CARPET



**VINITA KARIM**  
18 X 30 X 7 INCHES  
ACRYLIC ON FIBRE GLASS



**PUJA KSHATRIYA**  
18 X 30 X 7 INCHES  
ACRYLIC ON FIBRE GLASS



**SANJEEV SONPIPARE**  
18 X 30 X 7 INCHES  
ACRYLIC ON FIBRE GLASS





**JENNY BHATT**  
18 X 30 X 7 INCHES  
ACRYLIC ON FIBRE GLASS



**VILAS SHINDE**  
18 X 30 X 7 INCHES  
ACRYLIC ON FIBRE GLASS



**PRAVIN MISAL**  
18 X 30 X 7 INCHES  
ACRYLIC ON FIBRE GLASS



**ARZAN KHAMBNATTA**  
18 X 30 X 7 INCHES  
ACRYLIC ON FIBRE GLASS



**ARZAN KHAMBNATTA**  
18 X 30 X 7 INCHES  
ACRYLIC ON FIBRE GLASS



**JAIDEEP MEROHTRA**  
18 X 30 X 7 INCHES  
ACRYLIC ON FIBRE GLASS



**REVATI SHARMA SINGH**  
18 X 30 X 7 INCHES  
ACRYLIC ON FIBRE GLASS



**MANISHA JHA**  
18 X 30 X 7 INCHES  
ACRYLIC ON FIBRE GLASS





**JAIDEEP MEROHTRA**  
18 X 30 X 7 INCHES  
ACRYLIC ON FIBRE GLASS